

Interpretation Design

for English-ASL Interpreting
in Mainstream Group Settings

Steve Frank, CI & CT
Clear View Innovations

9 am, Sunday, April 7, 2019; Cosgrave 122
4th Biennial Student-Run Interpreting Conference
Mt. Aloysius College, Pennsylvania

Interpretation Design

for English-ASL Interpreting
in Mainstream Group Settings

Agenda

1. Recommendation
2. Setting
3. Hindrances
4. Rear & Split View
5. Methods
6. Exercise
7. Recommendation

Interpretation Design

for English-ASL Interpreting
in Mainstream Group Settings

Recommendation

1. PREVENT HINDRANCES
2. Design Your Own “Set-Up”
3. Fill the Cracks/Gaps
4. BE SELF-RELIANT

Interpretation Design

for English-ASL Interpreting
in Mainstream Group Settings

Setting

Mainstream Group: English to ASL

- educational classes
- workplace meetings
- conference workshops
- cultural performances
- worship services

Interpretation Design

for English-ASL Interpreting
in Mainstream Group Settings

Setting

Deaf-Dependent

Deaf-Independent

Where are you on the continuum?



Interpretation Design

for English-ASL Interpreting
in Mainstream Group Settings

Hindrances

anything that breaks the natural flow

- poor sound
- low lighting
- busy background
- complex visual aids
- missed non-verbal cues
- ???
-
-
-
-

Interpretation Design

for English-ASL Interpreting
in Mainstream Group Settings

Hindrances

- They eat up time, energy, cognitive load
- Who is responsible for preventing hindrances?
- Do they fall through the cracks?

Analogy to Driving

Hearing Participants/Drivers
Flat Road, Clear Glass & Smooth Driving



Deaf Participants/Drivers
Bumpy Road, Spotted Glass & Impeded Driving



Mainstream Group Setting ENERGY and COMPREHENSION

Deaf Consumer

Energy Level

Comprehension



Hearing Consumer

Energy Level

Comprehension



Mainstream Group Setting ENERGY and COMPREHENSION

Deaf Consumer

Energy Level

Comprehension



1610 Mile Gain

Hearing Consumer

Energy Level

Comprehension



1767 Mile Gain

Interpretation Design

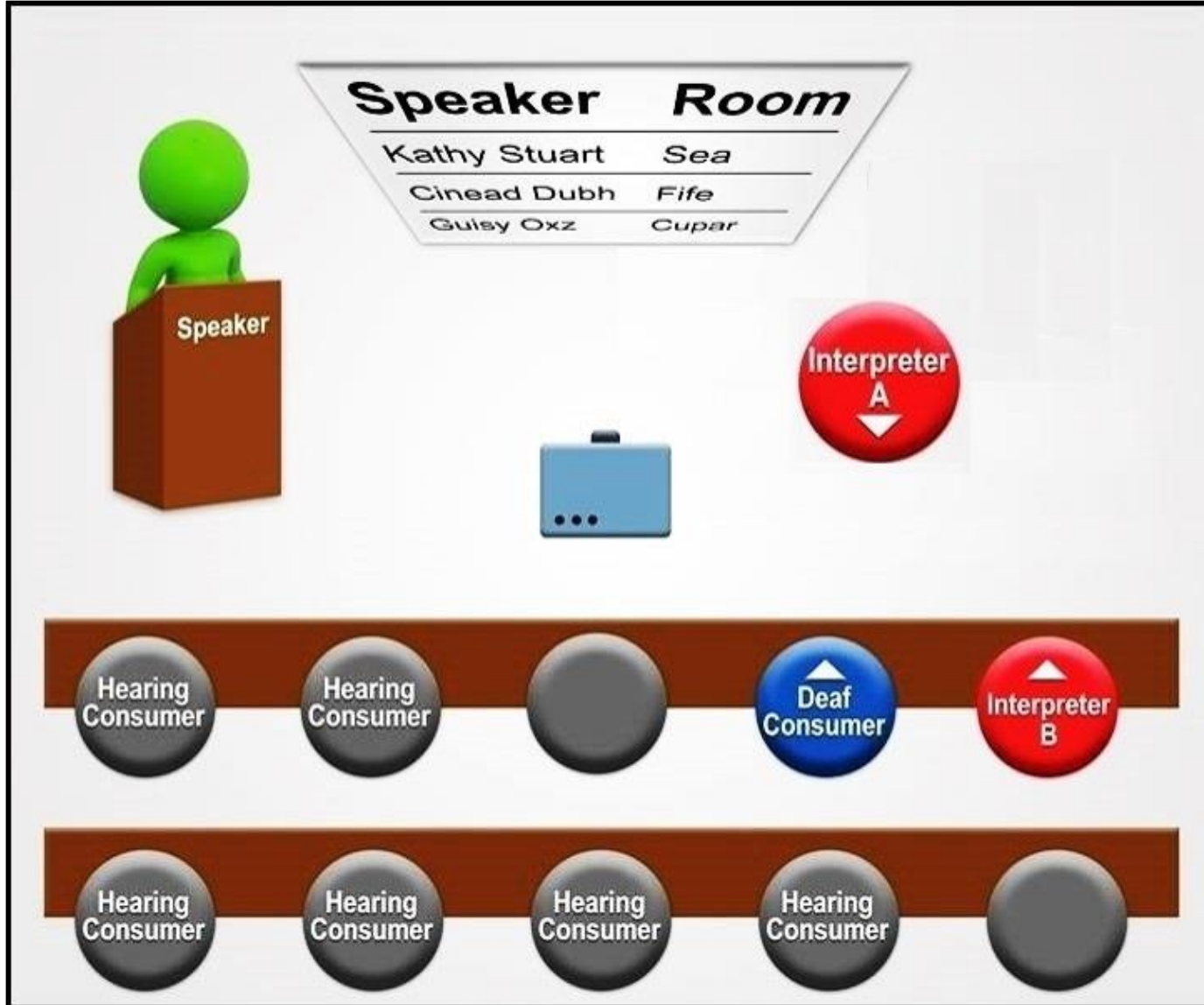
for English-ASL Interpreting
in Mainstream Group Settings

Rear and Split View

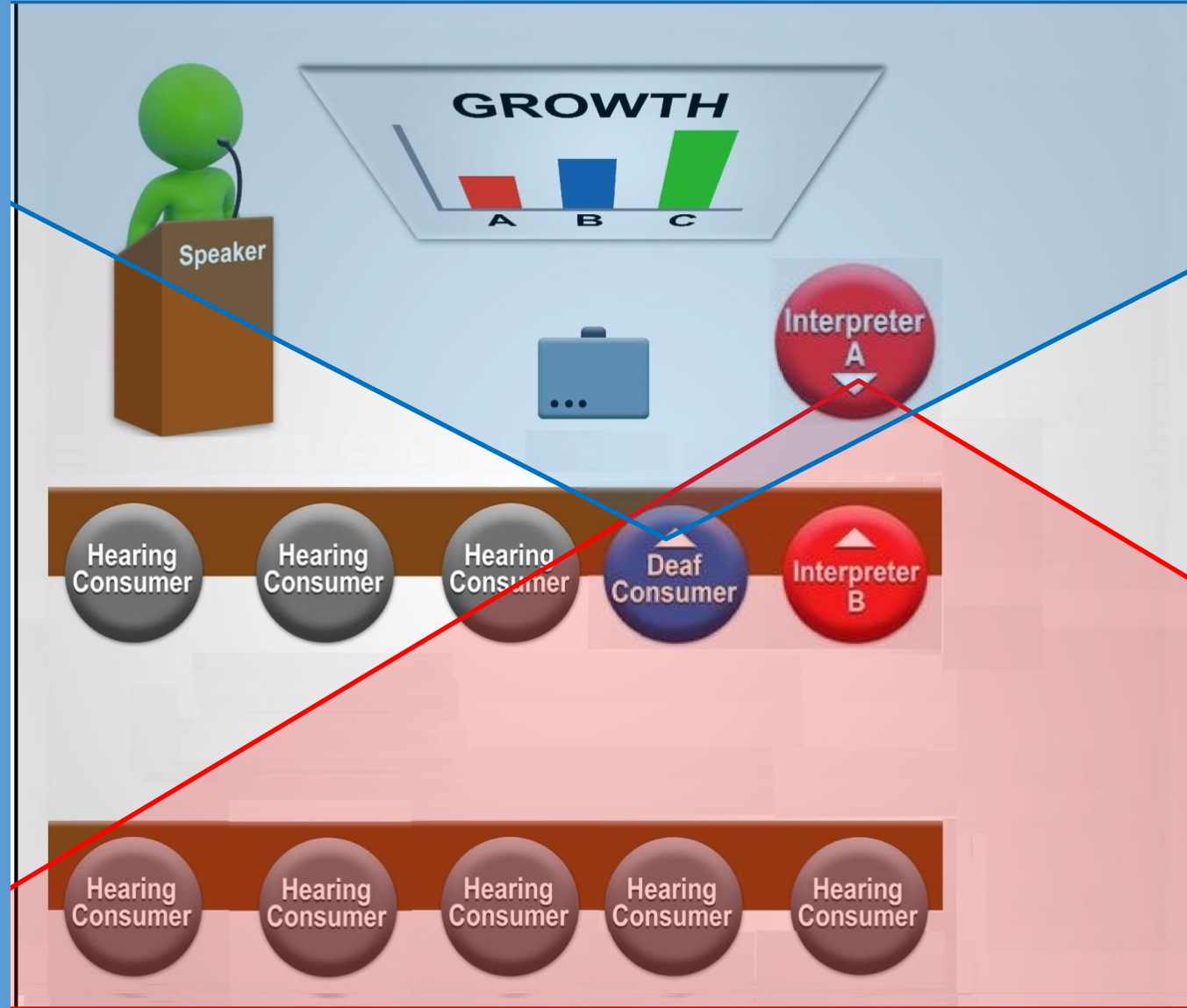
- Interpreter lacks real-time rear view
- Deaf consumer must split visual attention

Any adjustment takes time, energy, cognitive
load and coordination

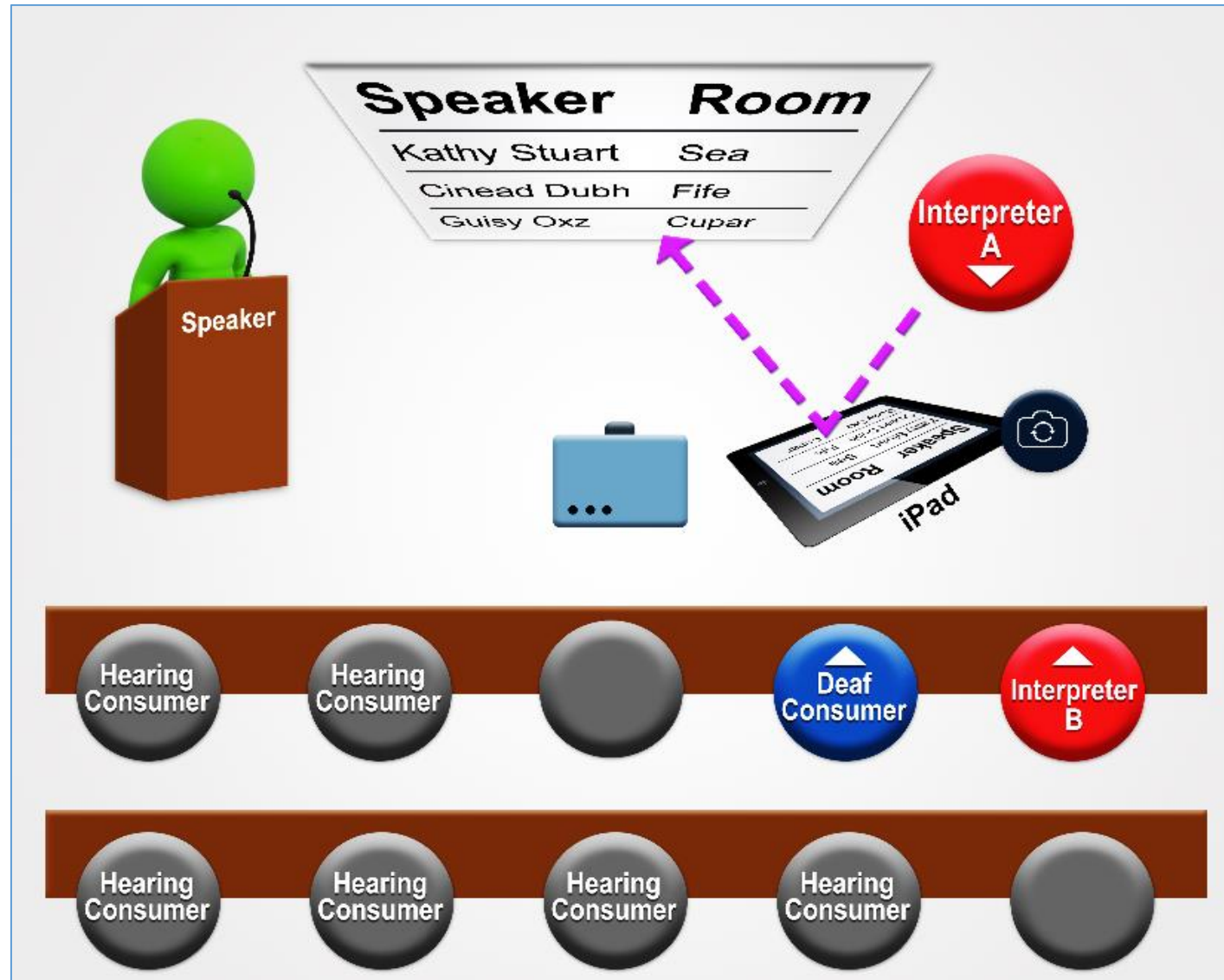
Standard Set-Up

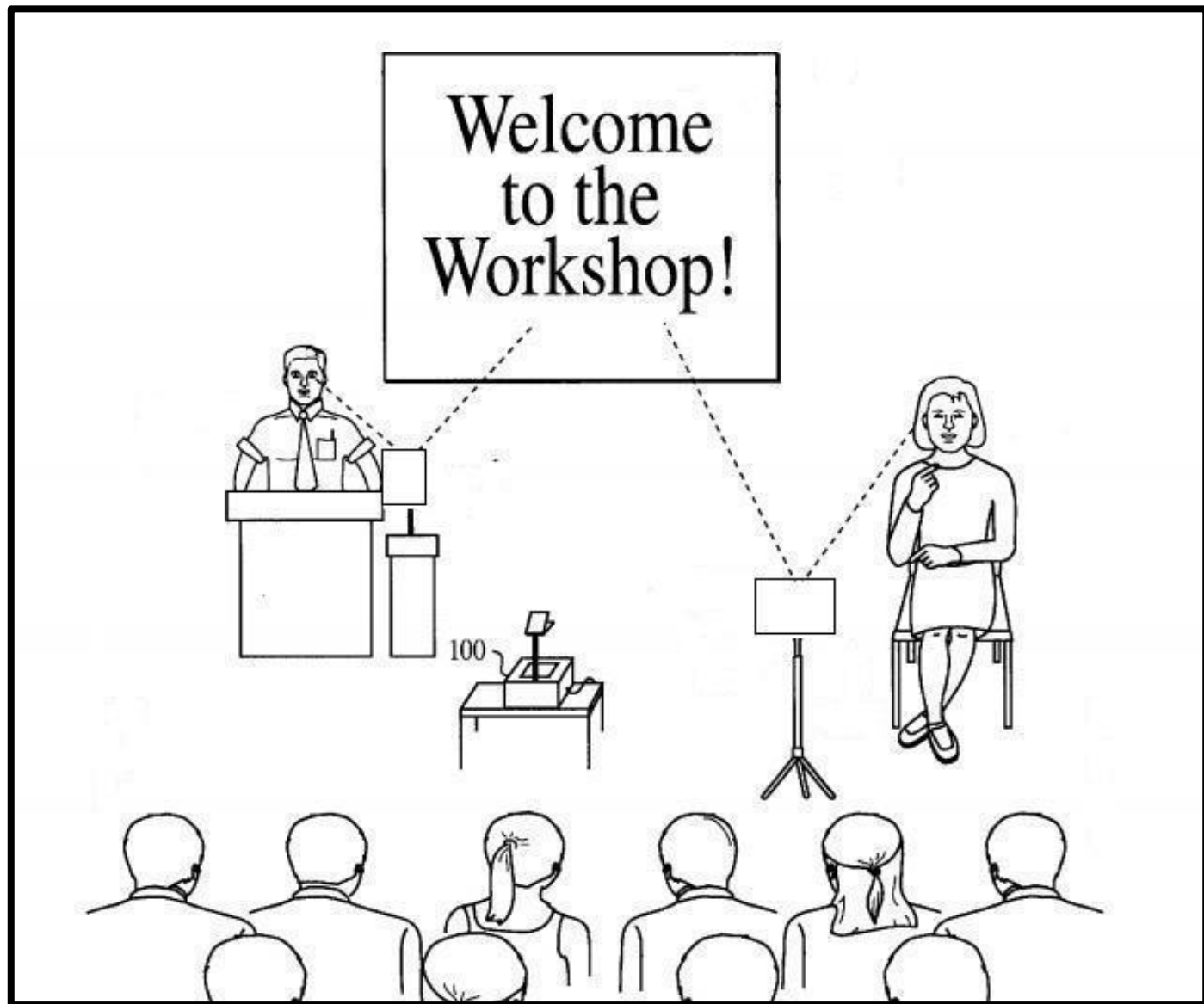


Standard Fields of View

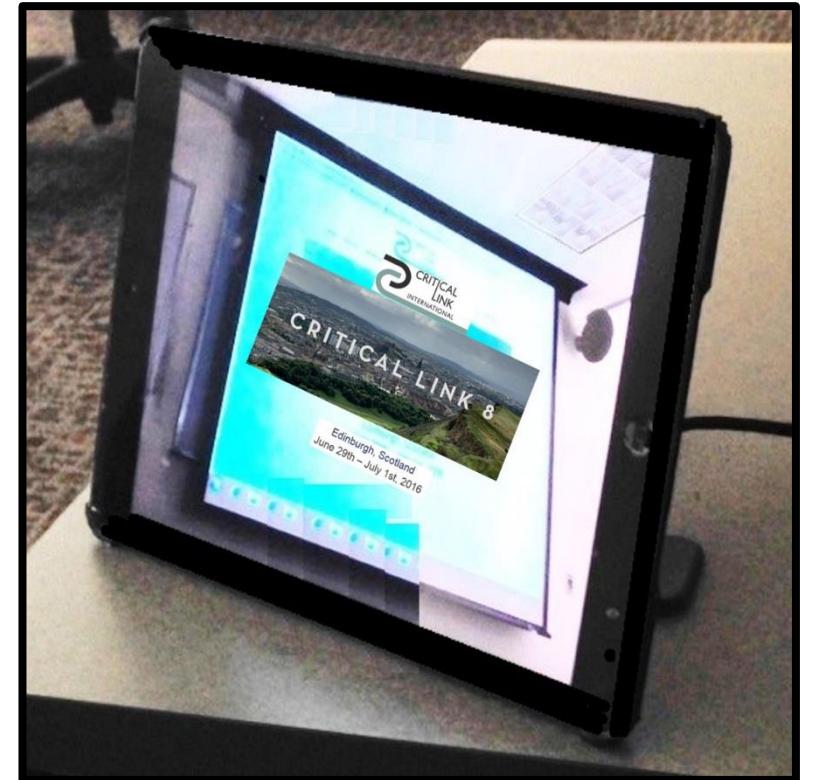
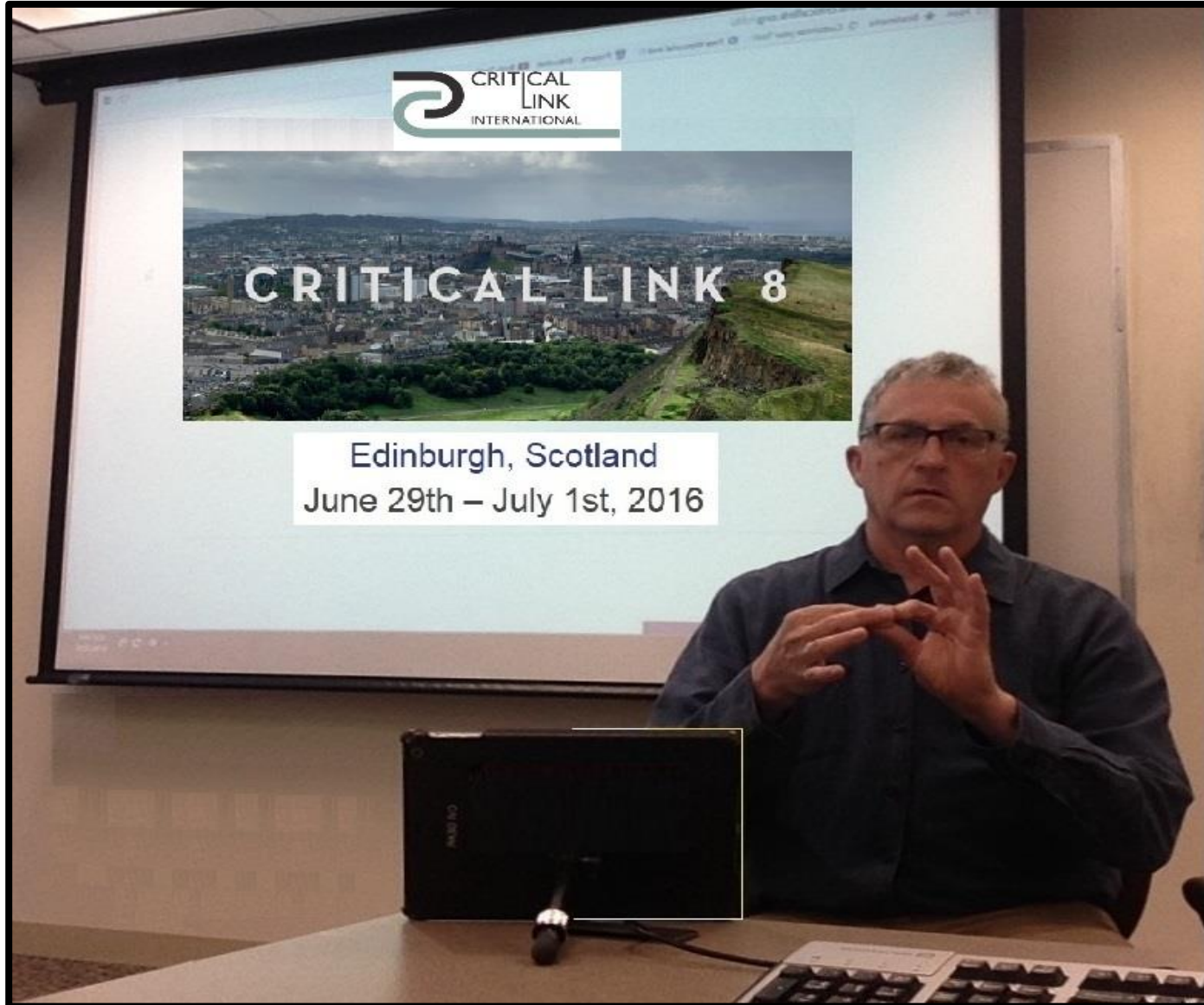


Video Visual Feed

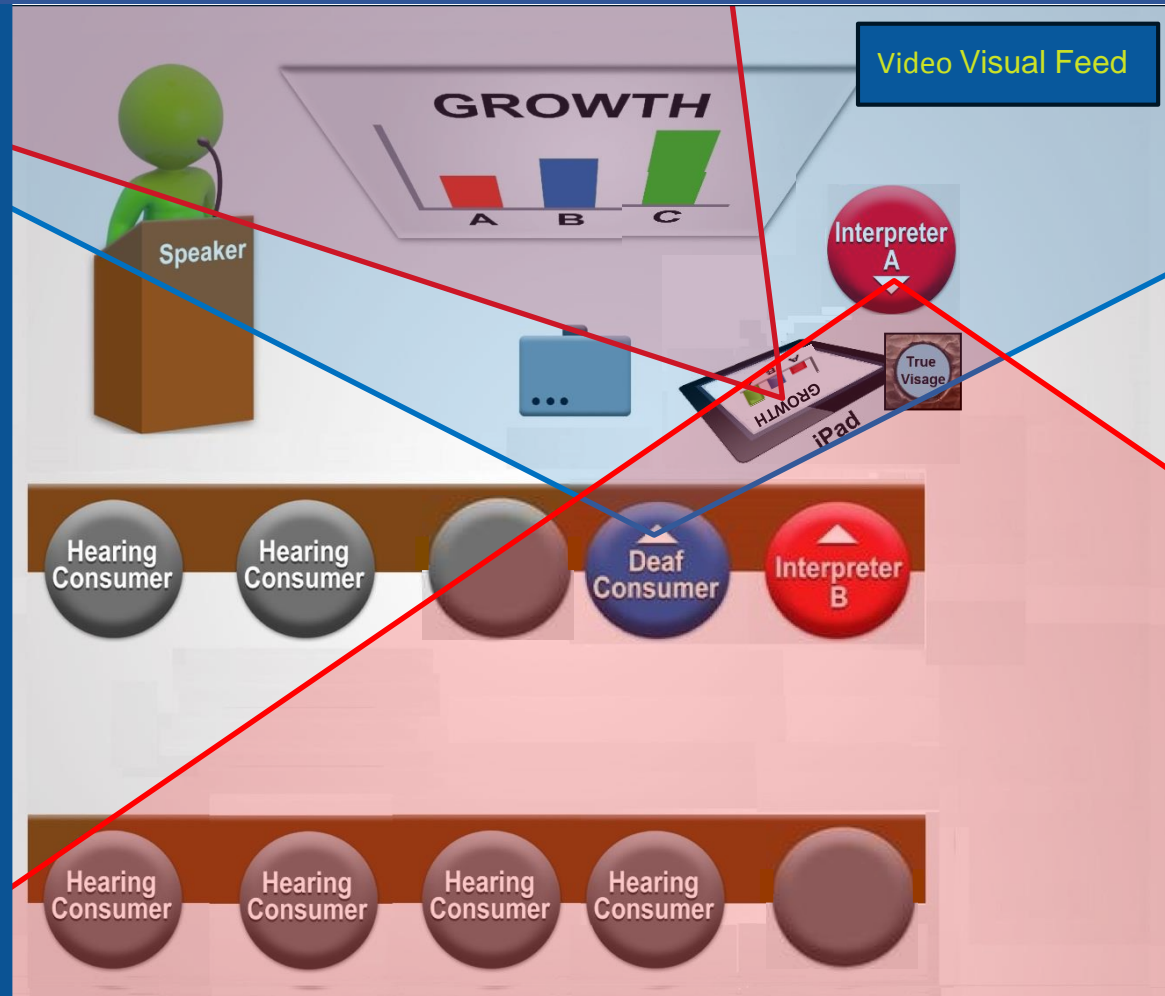




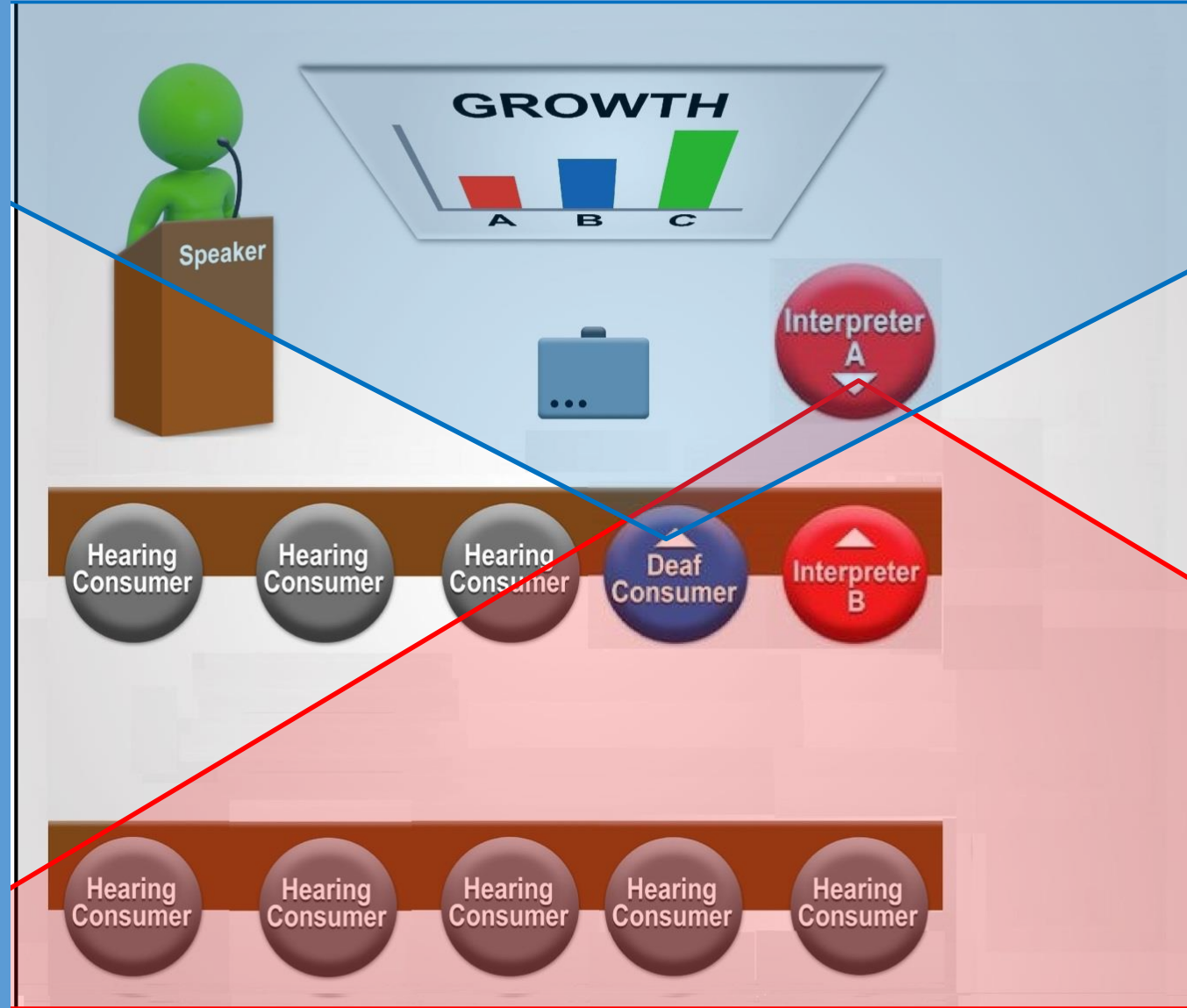
Video Visual Feed



Video Visual Feed



Standard Fields of View



Interpretation Design

for English-ASL Interpreting
in Mainstream Group Settings

Recommendation

1. PREVENT HINDRANCES
2. Design Your Own “Set-Up”
3. Fill the Cracks/Gaps
4. BE SELF-RELIANT

Interpretation Design

Steve Frank

Clear View Innovations

61 Penny Lane

Baltimore, MD 21218

(410) 491-9172

cvigear@gmail.com

www.cvigear.com

Seeking collaborators and testers!